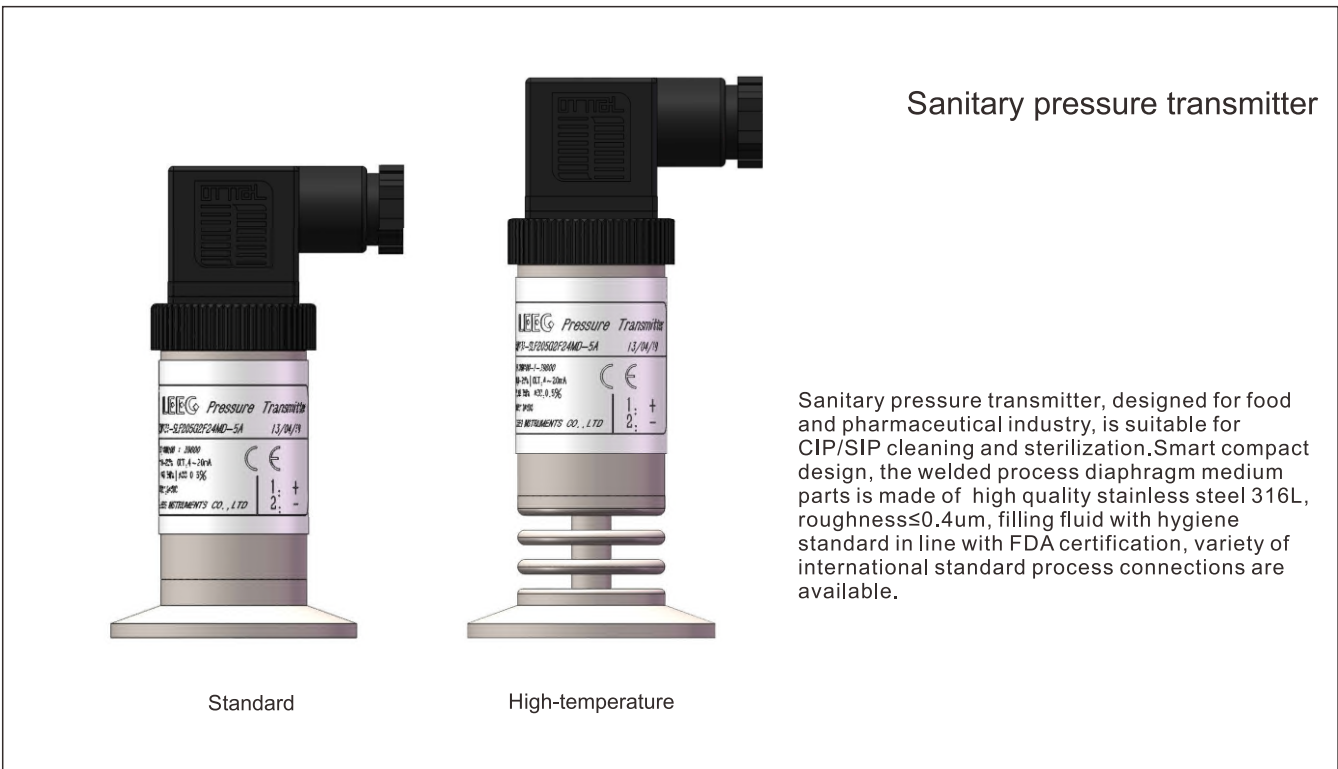


Product introduction

Description



Main parameters

Pressure types	Gauge pressure
Measuring range	10kPa-2MPa, please refer to the ordering information chapter
Output signal	4-20mA, 4-20mA+HART, 0.5-4.5VDC, Modbus-RTU/RS485, customer
Reference accuracy	\pm 0.2% URL, \pm 0.5% URL, customer

Field of application

Pressure, level

Approvals



Measuring medium

Viscous, paste-like, adhesive, crystallising, particulates containing and contaminated media

Technical specifications

Measuring range and limit

Nominal value	Smallest calibratable span	Lower range limit (LRL)	Upper range limit (URL)	Over pressure limit *
20kPa	10kPa	-20kPa	20kPa	30kPa
35kPa	20kPa	-35kPa	35kPa	52.5kPa
100kPa	35kPa	-100kPa	100kPa	150kPa
200kPa	100kPa	-100kPa	200kPa	300kPa
700kPa	200kPa	-100kPa	700kPa	1050kPa
1MPa	500kPa	-100kPa	1MPa	1.5MPa
1.7MPa	1MPa	-100kPa	1.7MPa	2.55MPa
3.5MPa	1.7MPa	-100kPa	3.5MPa	5.25MPa

The unit of the measuring range above can be converted into kg/cm² □ MPa and kPa. Provide other measuring range according to requirements. Adjust requirements: lower range value (LRV) and upper range value (URV) can be adjusted within the scope of the upper and lower range limit, minimum measuring range ≤ |URV - LRV| ≤ maximum measuring range.

*Limit value of overpressure: depends on the pressure value of the parts with lowest pressure capacity

Standard specifications and reference conditions

Test standard: GB/T28474 / IEC60770; Zero based-calibration span, Linear output, Silicone oil filling, 316L stainless steel isolation diaphragm.

Performance specifications

The overall performance including but not limited to 【reference accuracy】, 【environment temperature effects】 and other comprehensive error

Typical accuracy: ±0.2URL

Stability: ±0.2% URL/ year

Reference accuracy

Including linearity, hysteresis and repeatability. calibration temperature: 20°C±5°C

Linear output accuracy	Typical	±0.2%URL	Nominal value: 20kPa, 35kPa, 100kPa, 200kPa 700kPa, 1MPa 1.7MPa, 3.5MPa
	Max value/voltage output	±0.5%URL	

Ambient temperature effects(Typical)

Within the range - 20-80°C total impact ±0.2%URL/10k

Power supply effects

Zero and span change should not be more than ± 0.005% URL/V when power supply changes in 10.5/16.5-55VDC

Loading effects

Zero and span change should not be more than ± 0.05% URL/kΩ

Vibration effects

Vibration resistance According to IEC60068-2-6 , 10g RMS (25-2000HZ)

Impact resistance According to IEC60068-2-27 , 500g/1ms

Output signal

Signal	Type	Output
4-20mA	Linearity	Two wire
4-20mA, Intrinsic safety	Linearity	Two wire
4-20mA+HART	Linearity	Two wire
4-20mA+HART, Intrinsic safety	Linearity	Two wire
0.5-4.5VDC	Linearity	Three wire
Modbus-RTU/RS485	Linearity	Four wire

Disclaimer: all the data used in the product description is not legally binding. Relevant technical details may be changed due to further improve

Technical specifications

Insulation resistance

≥20MΩ@, 100VDC

Damping time

Total damping time constant: equal to the sum of damping time of amplifier and sensor capsule

Damping time of amplifier : 0-100S adjustable

Diaphragm capsule (isolation sensor diaphragm and silicon oil filling) damping time: ≤0.2S

Startup after power off : ≤3S (with HART communication: ≤0.2S)

Normal services after data recovery: ≤4S (with HART communication: ≤31S)

Environment condition

Items	Operational condition
Working temperature	-40-85°C
Storage temperature	-40-100°C
Media temperature	Sanitary fluid filling : -10-125°C; with heat exchange connector: -10-250°C*
	Silicon oil filling: -40-120°C, with heat exchange connector: -40-300°C*
Working humidity	0-95%RH
Protection class	IP67
Dangerous condition	ExiaIICT4Ga(GYB21.4032X)**
*Using heat exchange connector may lead to zero offset and temperature drift. The degree depends on mounting position and filling fluid	
**Please contact the engineer for further information	

Technical Specifications

Signal output	4-20mA	4-20mA+HART*	0.5-4.5VDC	0.5-4.5VDC(ratiometric output)	RS485
Power supply voltage	10-30VDC	10.5/16.5-55VDC	6-15VDC	5VDC	12-32VDC
Electric current	≤20.8mA		≤3.5mA		≤7mA
Load resistance(Ω)	<(U-10)/0.0208	<(U-10.5)/0.0208**	≥5k, recommend 100k		/
Transmission distance	<1000m		<5m		<1200m
Power consumption	≤500mW(20.8mA output@24VDC)		≤42mW(0.5-4.5VDC output, 12VDC)		≤168mW(RS485 output@24VDC)

*For this output type, the load resistance value in communication is 250Ω

**The load resistance value 0-2119Ω is in nominal working condition, 250-600Ω is HART communication

Technical specifications

EMC environment(not RS485 signal output)

NO.	Test items	Basic standards	Test conditions	Performance level
1	Radiated interference	GB/T 9254/CISPR22	30MHz-1000MHz	OK
2	Conducted interference (DC power port)	GB/T 9254/CISPR22	0.15MHz-30MHz	OK
3	Electrostatic discharge immunity test (ESD)	GB/T 17626.2/IEC61000-4-2	4kV(Contact),8kV(Air)	B(Note2)
4	Immunity to radio frequency EM-fields	GB/T 17626.3/IEC61000-4-3	10V/m(80MHz-1GHz)	A(Note1)
5	Power frequency magnetic field Immunity test	GB/T 17626.8/IEC61000-4-8	30A/m	A(Note1)
6	Electrical fast transient / Burst Immunity test	GB/T 17626.4/IEC61000-4-4	2kV(5/50ns,100kHz)	B(Note2)
7	Surge immunity requirements	GB/T 17626.5/IEC61000-4-5	1kV(Line to line) 2kV(Line to ground) (1.2us/50us)	B(Note2)
8	Immunity to conducted disturbances induced by radio frequency fields	GB/T 17626.6/IEC61000-4-6	3V(150kHz-80MHz)	A(Note1)

(Note 1)Performance level A: The performance within the limits of normal technical specifications.

(Note 2)Performance level B: Temporary reduction or loss of functionality or performance, it can restore itself. The actual operating conditions, storage and data will not be changed.

Product selection instruction

Sensor select instruction

Code	Nominal value	Description
L353G	35kPa	Range 0kPa-35kPa, smallest calibratable span 10kPa
L104G	100kPa	Range 0kPa-100kPa, smallest calibratable span 35kPa
L204G	200kPa	Range 0kPa-200kPa, smallest calibratable span 100kPa
L704G	700kPa	Range 0kPa-700kPa, smallest calibratable span 200kPa
L105G	1MPa	Range 0kPa-1MPa, smallest calibratable span 500kPa
L175G	1.7MPa	Range 0kPa-1.7MPa, smallest calibratable span 1MPa
L355G	3.5MPa	Range 0kPa-3.5MPa, smallest calibratable span 1.7MPa
Adjust requirements: lower range value (LRV) and upper range value (URV) can be adjusted within the scope of the upper and lower range limit, minimum measuring range $\leq URV - LRV \leq$ maximum measuring range		

Code	Position	Instruction
F	Sensor seal	Stainless steel welding seal

Electrical connection

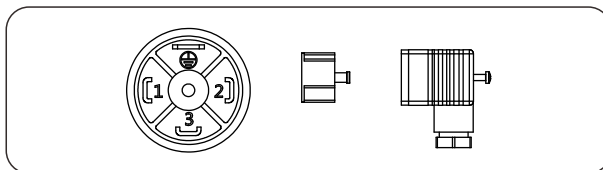
Code	Description
D1	DIN43650 connector, IP65

DIN43650(D1)



Electrical connection

DIN43650(D1)



Label	Two wires	Three wires	Four wires	Modbus-RTU/RS485
1	Power+	Power+	Power+	Power+
2	Power+	Power-	Power-	Power-
3	Key-z	Signal+	Signal+	A+
⊕			Signal-	B-

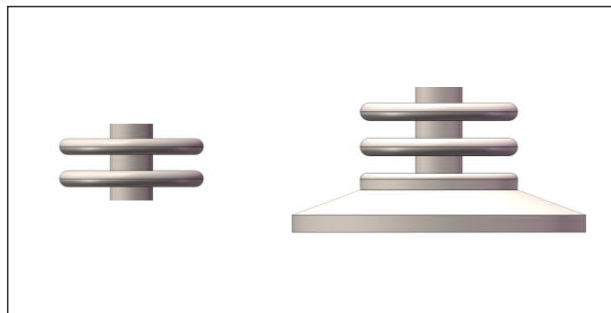
Note: Key-z is modified zero pressure

Product selection instruction

Transmission module

Code	Description
F	4-20mA two wire, power supply: 10-30VDC
A	4-20mA two wire, intrinsic safety, power supply: 14-28VDC
H	4-20mA+HART two wire, power supply: 16.5-55VDC
B	4-20mA+HART two wire, intrinsic safety, power supply: 18.5-28VDC
R	Modbus-RTU/RS485 four wire, power supply: 12-32VDC
5	0.5-4.5VDC three wire, power supply: 6-15VDC
6	0.5-4.5VDC three wire, proportional output power supply: 5VDC

Cooling element connector (HT)

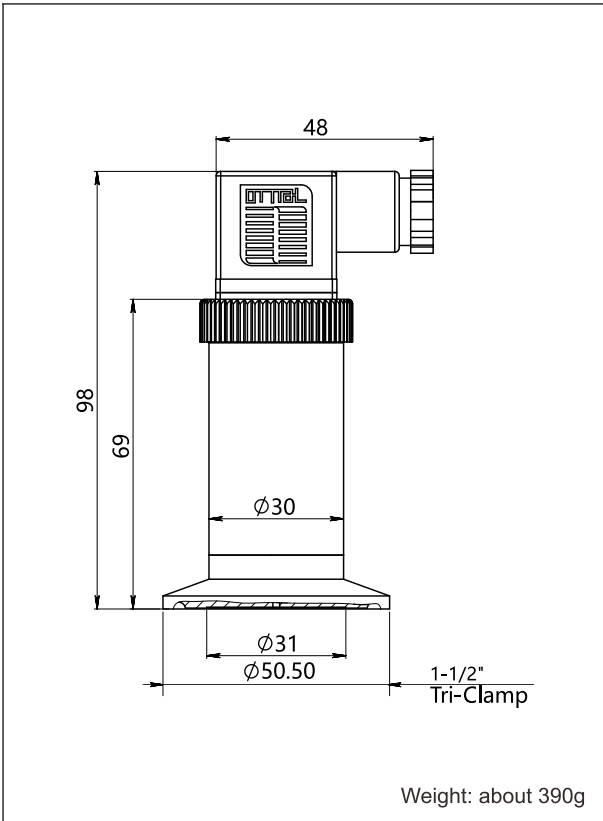


Process connection select instruction

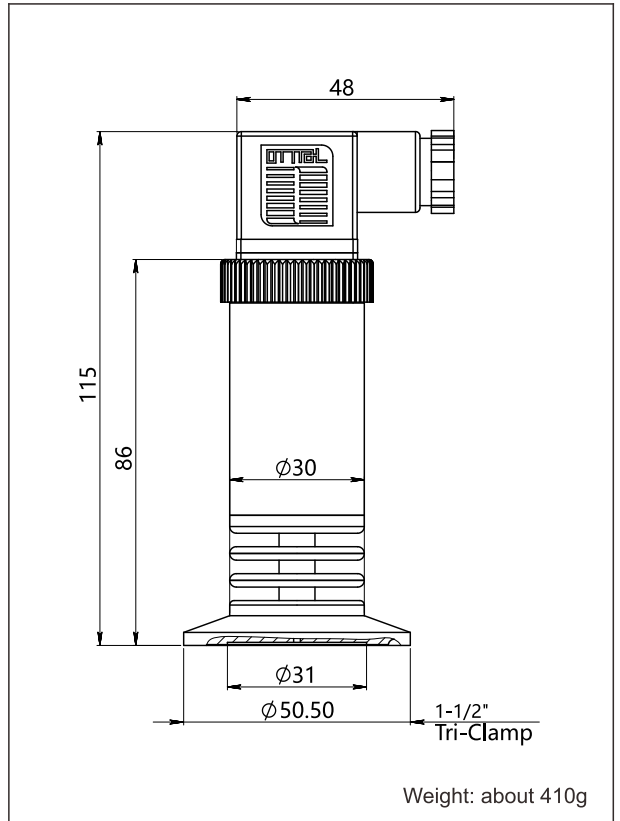
Code	Items	Description
4	Process connector material	Stainless steel, SUS304
6		Stainless steel, SUS316
NT	Connection type	Standard connection, medium temperature: -25-85°C
HT		Cooling element connector, medium temperature: -40-150°C
F	Isolation fluid filling	Sanitary fluid filling, Neobee M-20, process temperature: -10-180°C
S		Silicon oil filling, process temperature: -45-205°C
S	Isolation diaphragm material	SUS316L
H		Hastelloy C
K01	Process connection specifications	Tri-Clamp 1-1/2"
K02		Tri-Clamp 2"
K03		DIN32676 DN32
K04		DIN32676 DN40
K05		DIN32676 DN50
K06		ISO2852 DN38
K07		ISO2852 DN40
K08		ISO2852 DN51
K09		DIN11851 DN25
K10		DIN11851 DN40
K11		DIN11851 DN50
K12		SMS DN1-1/2"
K13		SMS DN2"
K14		IDF DN1-1/2"
K15		IDF DN2"
K18		DRD
K20		Plug in tube flush sanitary clamp

Product drawing and dimension

Standard drawing and dimension with DIN43650 (D1) (unit:mm)



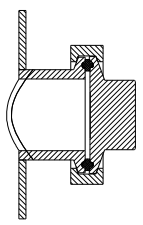
High-temperature drawing and dimension with DIN43650 (D1) (unit:mm)



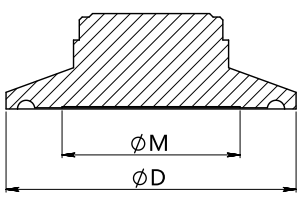
Product drawing and dimension

Process connection (K01-K08)(unit: mm)

Installation Sketches



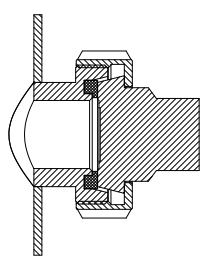
Dimension



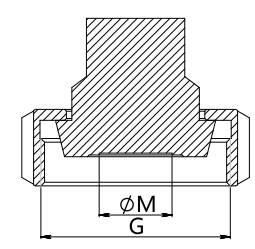
Standard	Specification	Size(ΦD)	Diaphragm size(ΦM)
Tri-Clamp	1-1/2"	50.5	31
Tri-Clamp	2"	64	42
DIN32676	DN32	50.5	31
DIN32676	DN40	50.5	31
DIN32676	DN50	64	42
ISO2852	DN38	50.5	31
ISO2852	DN40	64	42
ISO2852	DN51	64	42

Process connection (K09-K11)(unit: mm)

Installation Sketches



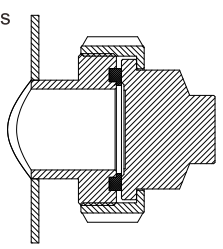
Dimension



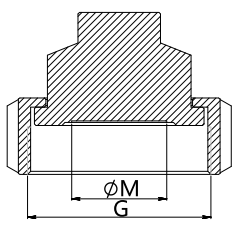
Standard	Specification	Size(G)	Diaphragm size(ΦM)
DIN11851	DN25	Rd 52*1/6	20
DIN11851	DN40	Rd 65*1/6	31
DIN11851	DN50	Rd 78*1/6	42

Process connection (K12-K13)(unit: mm)

Installation Sketches



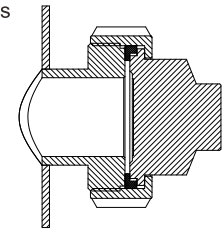
Dimension



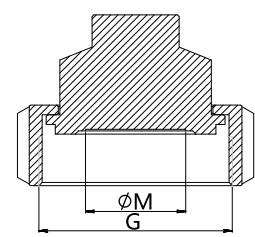
Standard	Specification	Size(G)	Diaphragm size(ΦM)
SMS	1-1/2"	Rd 60*1/6	31
SMS	2"	Rd 70*1/6	42

Process connection (K14-K15)(unit: mm)

Installation Sketches



Dimension

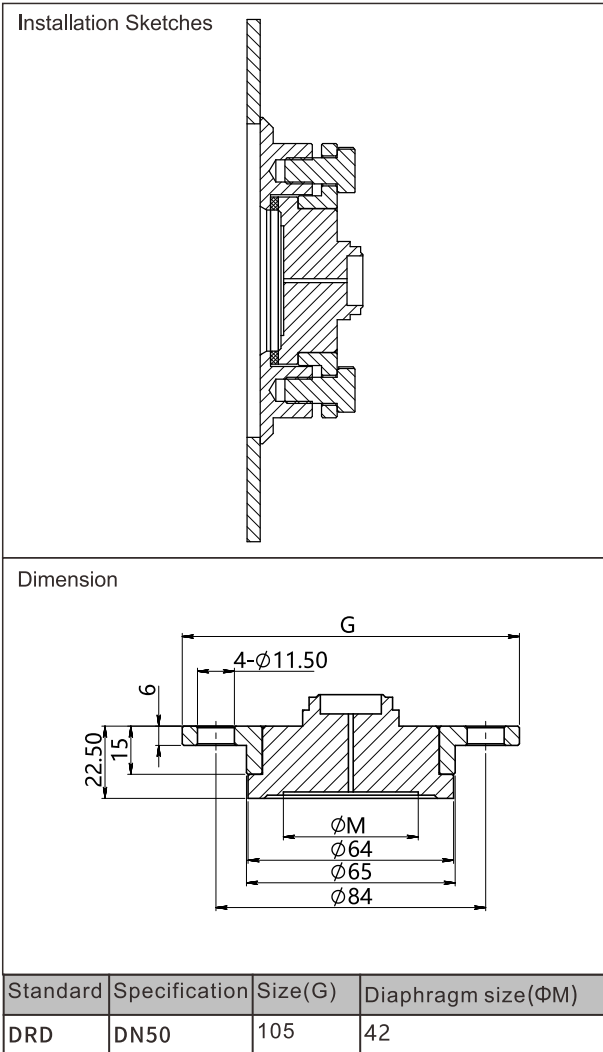


Standard	Specification	Size(G)	Diaphragm size(ΦM)
IDF	1-1/2"	IDF 1-1/2"	31
IDF	2"	IDF 2"	42

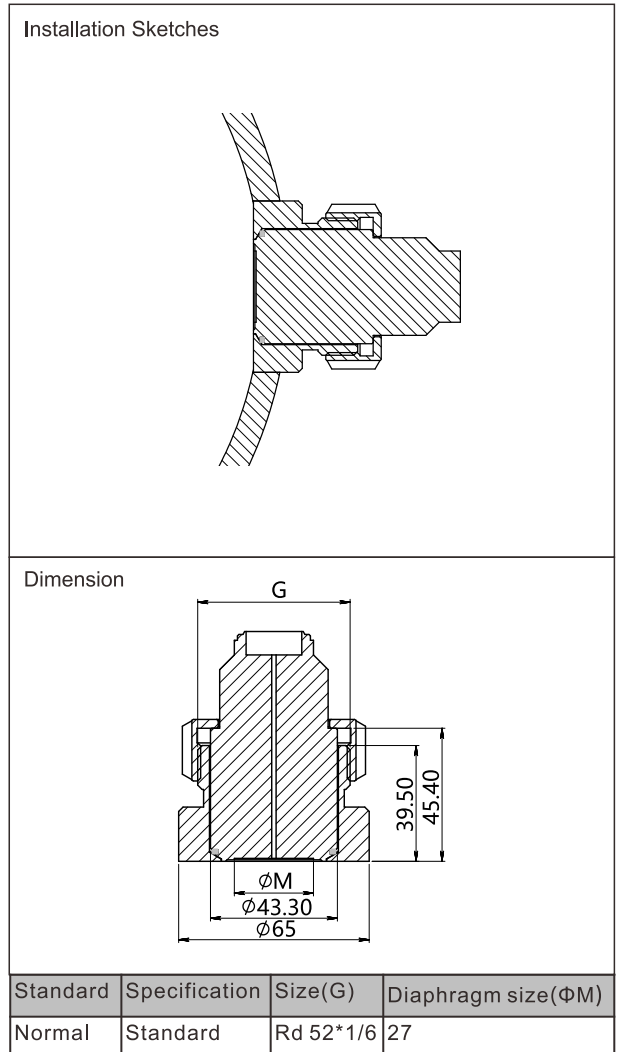
Disclaimer: all the data used in the product description is not legally binding. Relevant technical details may be changed due to further improve

Product drawing and dimension

Process connection (K18) (unit: mm)

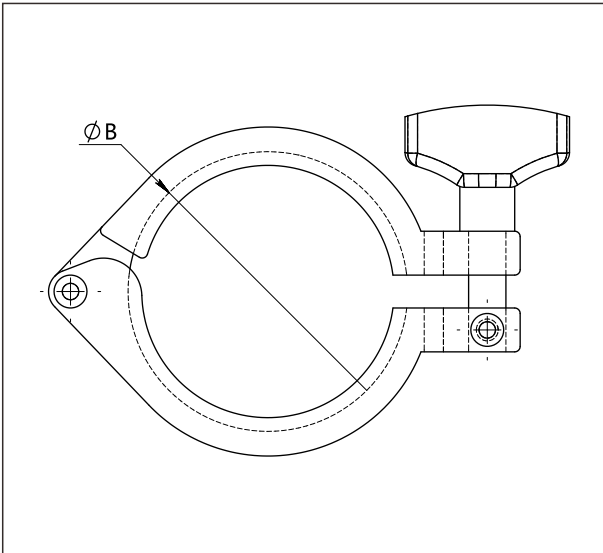


Process connection (K20) (unit: mm)



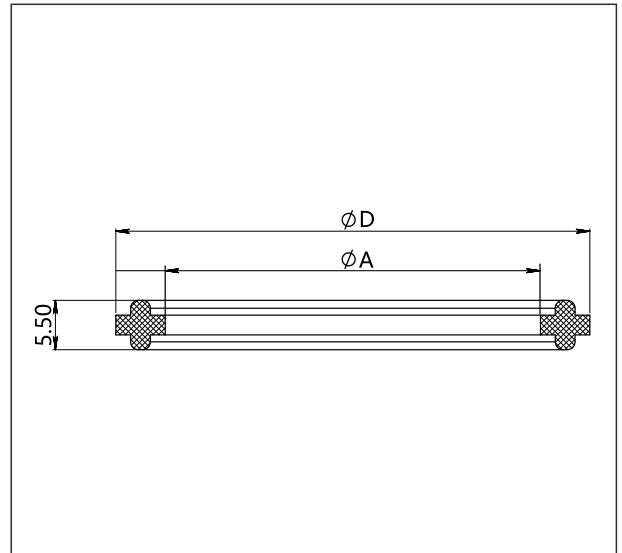
Product drawing and dimension

Tri-Clamp G1-G2 (unit: mm)



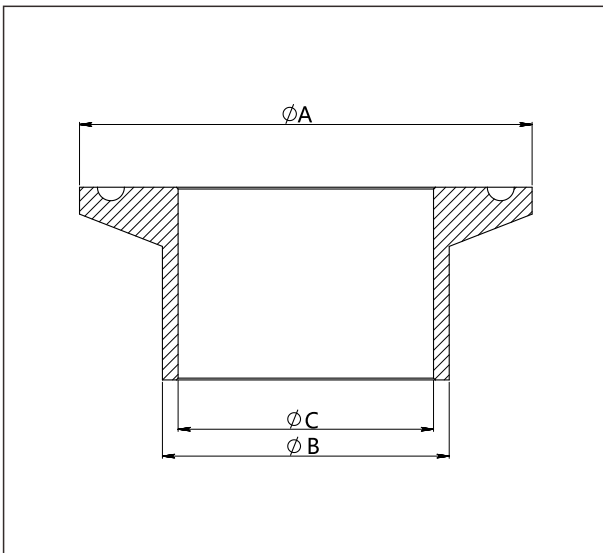
Standard	Specification	Size(ΦB)
Tri-Clamp	1-1/2"	53.9
Tri-Clamp	2"	67.4

Seal ring (M1-M2) (unit: mm)



Standard	Specification	Size(ΦD)	Size(ΦA)
Tri-Clamp	1-1/2"	50.5	35
Tri-Clamp	2"	64	47.8

Welding adaptor(Z1-Z1)(unit:mm)



Standard	Specification	Size(ΦA)	Size(ΦB)	Size(ΦC)
Tri-Clamp	1-1/2"	50.5	38	35.6
Tri-Clamp	2"	64	51	48.6

Ordering information chapter

Item	Parameters	Code	Instruction	(*) Fast delivery available
	Model	SMP858-TLD	Piezoresistive silicon gauge pressure transmitter	
Sensor	Separator	-	Detailed specifications as following	
	Pressure range code	L353G	Nominal value(URL): 35kPa(gauge pressure)	
		L104G	Nominal value(URL): 100kPa(gauge pressure)	*
		L204G	Nominal value(URL): 200kPa(gauge pressure)	*
		L704G	Nominal value(URL): 700kPa(gauge pressure)	*
		L105G	Nominal value(URL): 1MPa(gauge pressure)	*
		L175G	Nominal value(URL): 1.7MPa(gauge pressure)	*
		L355G	Nominal value(URL): 3.5MPa(gauge pressure)	
	Sensor seal	F	Stainless steel welding seal	
Electrical connection	Separator	-	Detailed specifications as following	
	Electrical connection	D1	DIN43650 connector, IP65	*
	Cable entry protector	R0	None	
Output	Separator	-	Detailed specifications as following	
	Output signal	F	4-20mA two wire, power supply: 10-30VDC	*
		A	4-20mA two wire, intrinsic safety, power supply: 14-28VDC	
		H	4-20mA+HART two wire, power supply: 16.5-55VDC	*
		B	4-20mA+HART two wire, intrinsic safety, power supply: 18.5-28VDC	
		R	Modbus-RTU/RS485 four wire, power supply: 12-32VDC	
		5	0.5-4.5VDC three wire, power supply: 6-15VDC	
		6	0.5-4.5VDC three wire, ratiometric output, power supply: 5VDC	
Body tube	Separator	-	Detailed specifications as following	
	Tube	53	Stainless steel tube length: 50mm (HART, Modbus-TRU/RS485 is not available)	*
		65	Stainless steel tube length: 65mm (HART, Modbus-TRU/RS485 is not available)	*
		85	Stainless steel tube length: 85mm (with HART □ Modbus-TRU/RS485)	
Process connection	Separator	-	Detailed specifications as following	
	Process connector material	4	Stainless steel, SUS304	*
		6	Stainless steel, SUS316	
	Connection type	NT	Standard connection, medium temperature: -25-85°C	*
		HT	Cooling element connector, medium temperature: -40-150°C	*
	Isolation fluid filling	F	Sanitary fluid filling, Neobee M-20, process temperature: -10-180°C	*
		S	Silicon oil filling, process temperature: -45-205°C	*

Disclaimer: all the data used in the product description is not legally binding. Relevant technical details may be changed due to further improve

Ordering information chapter

	Isolation diaphragm material	S	SUS316L	
		H	Hastelloy C	
	Process connection specifications	K01	Tri-Clamp 1-1/2", max measuring range 2MPa	*
		K02	Tri-Clamp 2", max measuring range 2MPa	*
		K03	DIN32676 DN32, max measuring range 1.6MPa	
		K04	DIN32676 DN40, max measuring range 1.6MPa	
		K05	DIN32676 DN50, max measuring range 1.6MPa	
		K06	ISO2852 DN38, max measuring range 4MPa	
		K07	ISO2852 DN40, max measuring range 4MPa	
		K08	ISO2852 DN51, max measuring range 2.5MPa	
		K09	DIN11851 DN25, max measuring range 2.5MPa	
		K10	DIN11851 DN40, max measuring range 2.5MPa	
		K11	DIN11851 DN50, max measuring range 2.5MPa	
		K12	SMS DN1-1/2", max measuring range 2.5MPa	
		K13	SMS DN2", max measuring range 2.5MPa	
		K14	IDF DN1-1/2", max measuring range 2MPa	
		K15	IDF DN2", max measuring range 2MPa	
		K18	DRD, max measuring range 2.5MPa	
		K20	Plug in tube flush sanitary clamp, max measuring range 2MPa	
		Additional options	Separator	-
	Process connection accessory	/G1	1.5" Tri-Clamp	*
		/G2	2" Tri-Clamp	*
		/M1	1.5" sealing gasket, material: silicon rubber, process temperature range: -60-200 °C	*
		/M2	2" sealing gasket, material: silicon rubber, process temperature range: -60-200 °C	*
		/Z1	Welding adaptor, Tri-Clamp 1-1/2"	*
		/Z2	Welding adaptor, Tri-Clamp 2"	*
	Calibration report	/Q1	Calibration report provided by our company	*
	Approvals (multiple)	/I2	Intrinsic safety certificate, Exia IICT4Ga, NEPSI	*
		/F3	CE certificate	*
		/R1	RoHS certificate	
	Wetted parts treatment	/G1	Ungrease treatment	
		/G2	Electropolishing treatment	

Approvals

Factory certificate

Certification organization	Intertek
Quality management system	ISO9001-2015
Scope of certification	Design and production of pressure transmitter
Registration number	110804039

CE

Certificate organization	TUV
License scope	SMP131 series pressure transmitter
Mark	CE
EMC instruction	2014/30/EU
Standard	ENIEC61000-6-4:2019 ENIEC61000-6-2:2019
Registration number	E8A1177210001

Intrinsic safety certificate

Certification organization name	NEPSI
Licenses range	SMP858 series pressure transmitter
Explosion-proof mark	ExiaIICT4Ga
Ambient temperature	-40-+60°C
Medium maximum temperature	+120°C
Registration number	GYB21.4032X
Intrinsically safe parameter description	Maximum input voltage:28VDC
	Maximum input current:100mA
	Maximum input power:0.7w
	Maximum internal equivalent parametersCi(nF):0
	Maximum internal equivalent parametersLi(mH):0



scan & follow LEEG wechat



check website for more info